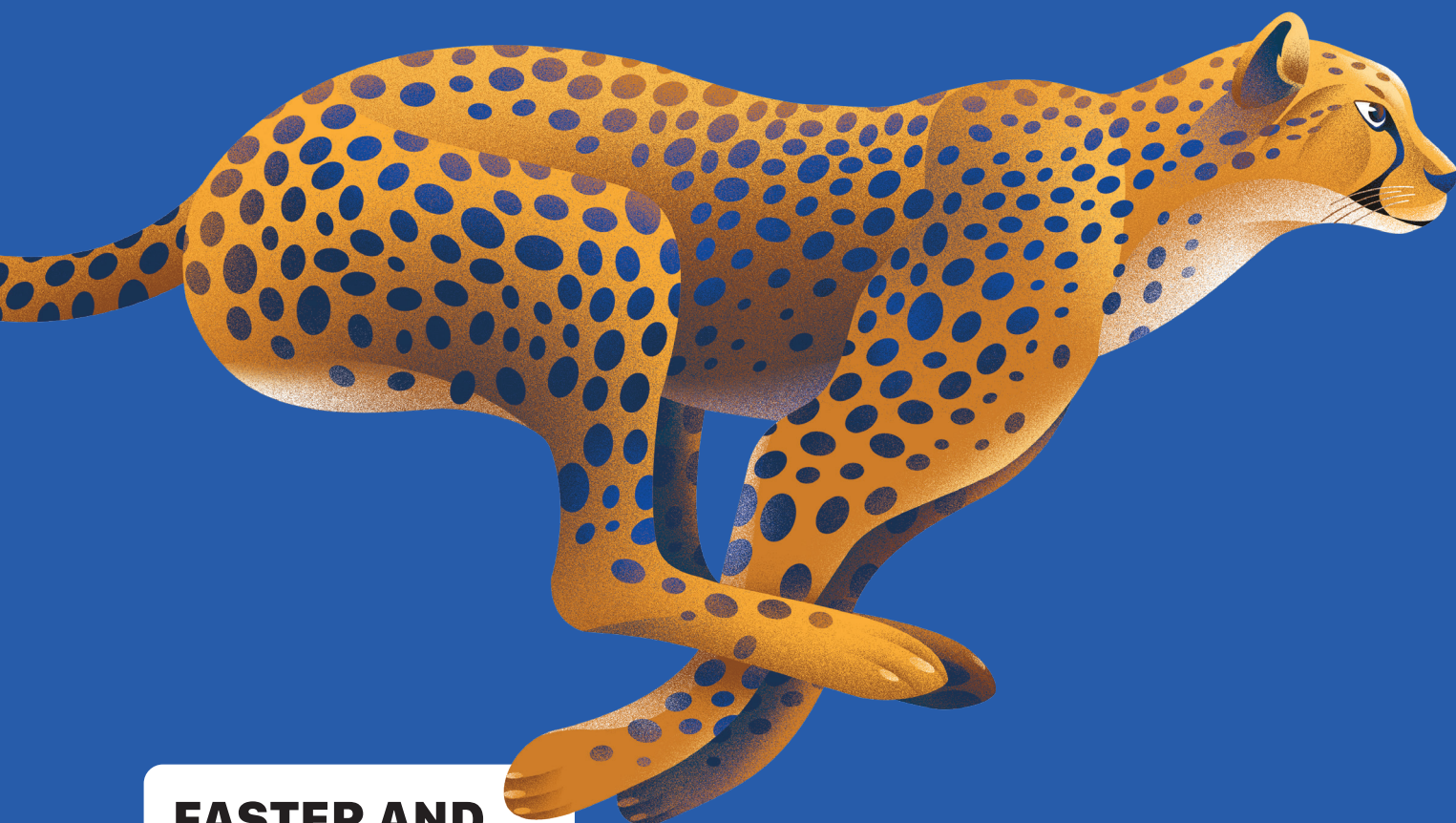


RAMCO

HARD WORKER



BLOCK FIX HW301



FASTER AND STRONGER

- ★ **STRONG BOND**
- ★ **HIGH COVERAGE**
- ★ **EASY APPLICATION**

40KG

Why HW Block Fix?

FASTER AND STRONGER

For projects that demand speed and strength, Hard Worker Block Fix is the right choice. Just add water to the ready-to-use formulation. It bonds fast and clean while cutting down on time, effort and material. Just a 10 mm joint delivers high adhesion across red bricks, hollow and fly ash blocks, and stones. No on-site batching required. The result: faster walls, confident masonry, and a finish that holds up through time.

STRONG BOND

Unlike cement-sand mixes, this blended dry mix mortar grips tight, reducing cracks and delays. HW301 is designed to build structural integrity from the first layer.

HIGH COVERAGE

Spreads easy, bonds strong and covers more area. Reduces material loss and speeds up progress across large wall areas.

EASY APPLICATION

Pre-mixed. Site ready. Just add clean water, mix and apply. The paste flows smooth, and keeps the blocks firm in place.

COMPATIBLE

Engineered for various substrate types.

Substrate		Coverage in SQFT / 40 kg Thickness 10 mm
Red Brick		15 – 16
Fly Ash Brick		15 – 16
Solid Brick	4 inch	41 – 42
	6 inch	27 – 28
	8 inch	20 – 21
Laterite blocks	6 inch	34 – 35

60
MINS

POT LIFE

HIGH

SPLIT TENSILE
STRENGTH AT JOINTS
0.2-0.35 MPa

SAVES

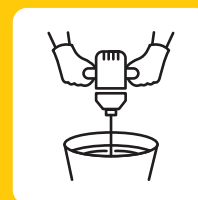
WATER & TIME
SELF-CURING

APPLICATION



Add HW to water.

16-18% water by weight of HW301.



Mix to a thick paste.

Gradually mix with a slow speed blender.



Clean the blocks.



Apply 8 mm to 10 mm.

Apply evenly using a normal trowel.



Fix the blocks.

Press blocks firmly. Remove excess mortar.



Scan to watch Application Video.



Toll Free No: 1800 202 5700
customercare@ramcocements.co.in